

emma's

P R O P E R T I E S



64 Chester Road, Birmingham, B36 9BU

Offers in excess of £540,000

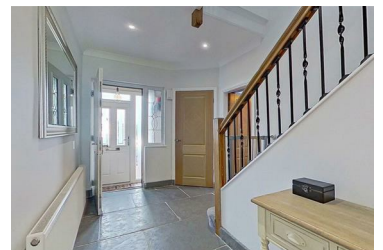


A beautifully presented and recently renovated 1930's detached family home, located in the heart of the highly sought-after Castle Bromwich Village. This exceptional property offers four bedrooms, two bathrooms, Two main reception room, a guest WC, and an impressive level of specification throughout.

Set behind a generous in-and-out driveway providing ample off-road parking, the property immediately impresses with its kerb appeal entrance. Internally, the home blends original character with modern luxury, featuring oak doors throughout, high-quality flooring, and stylish finishes in every room.

The ground floor comprises a welcoming hallway, a spacious reception room ideal for family living and entertaining, a stunning open-plan kitchen/diner with a central island, quartz worktops, and high-end integrated appliances. The kitchen truly is the heart of the home, offering both style and functionality. There is also a useful guest WC and additional practical storage.

Upstairs, the property boasts four generously sized bedrooms. The master bedroom benefits from a modern en-suite, while the remaining bedrooms are serviced by a luxurious family bathroom featuring a freestanding bath and separate walk-in shower.



emma's
P R O P E R T I E S

4 Rectory Lane, Rectory Lane, Birmingham, B36 9DH

Tel: 01217 944916

Email: Emma@emmasproperties.co.uk